

HOLLOW METAL DOORS

Standard & Custom Engineered Doors

HMD-EMB EMBOSSSED DOOR SERIES

MDI® **EMBOSSSED** Doors are available as: 18 Gauge Medium-Heavy Duty
20 Gauge Medium-Standard Duty

A Complete line of Doors, Frames & Hardware



The **MDI® Embossed Door Series** provides timeless sophistication that enhances your residential or commercial project. Door construction provides a seamless face, free of welding marks. Beyond its elegant classic appearance, the Embossed Series can also be fire labeled for up to 3 hours. Standard doors are 1¾ in. (45 mm) thick and are available in 18 and 20 gauge* commercial quality (A40 galv.) steel.

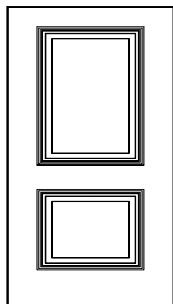
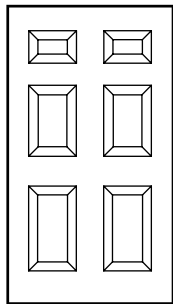
The Embossed door series is available in a variety of sizes and gauges. Presently it's available as 6-panel (6P) and 2-panel (2P) design (1-panel design is coming soon) and we can add vision lites and louvers upon request. Honeycomb is the standard core for the embossed series but as with our other door series the optional polystyrene insulated and polyurethane insulated cores are available. As with any door or frame by Metropolitan, we can custom engineer the embossed series door to meet your specifications. Contact our sales office for more details.

General Specifications

- Door faces are flush design and free of any joints, welds or seams.
- Vertical edges are interlocked with a mechanical seam and reinforced with a reinforced epoxy resin, high viscosity, thicksotropic sealant. Seamless edge is optional.
- Hinge reinforcements are prepared for standard weight 4 1/2" x 4 1/2" (114 mm x 114 mm) hinges.
- Hinge reinforcements can easily be field converted to accommodate heavy weight hinges.

Three Door Cores Available

- Honeycomb (HMD-HC), Polystyrene insulated (HMD-PS) or Polyurethane insulated (HMD-PU).



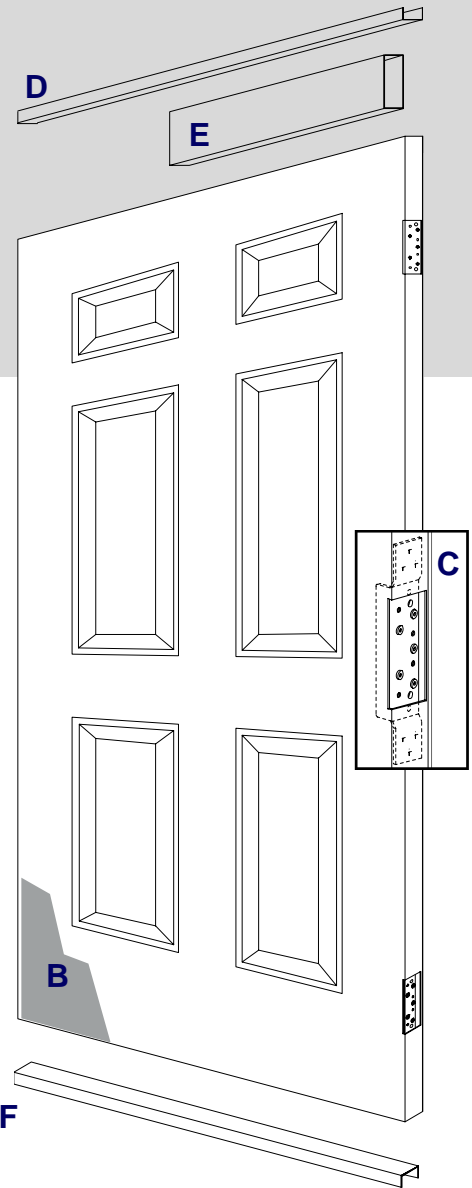
© 2007 Metropolitan Door Industries Corp.

© MDI and the MDI designed logo are Registered Trademarks of Metropolitan Door Industries Corp.

www.metropolitandoor.com

▶ MDI® Typical **EMBOSED** Door Construction

- A. Door face sheets (A40 galv., stainless steel or G90 galvanized).
- B. Door core: Honeycomb, polystyrene or polyurethane.
- C. 10 gauge high frequency dual purpose hinge reinforcement with return bend for added strength and rigidity. Hinge reinforcements can be easily field converted to accommodate heavy weight hinges. 7 gauge hinge reinforcements are optional.
- D. 18 gauge inverted top channel projection welded to the door skins and tack weld at each corner for added rigidity. Vinyl cap at top; or metal cap at top (flush and water-tight) are optional.
- E. 18 gauge door closer reinforcement—box style.
- F. 18 gauge inverted bottom channel projection welded to the door skins and tack weld at each corner for added rigidity. Metal cap at bottom (flush and water-tight) is optional.



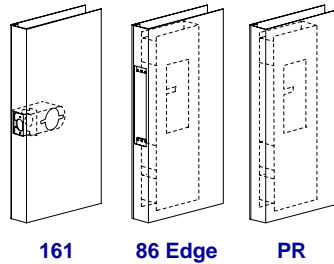
▶ **Standard Lock Preps**

161: Cylindrical lock reinforcement with added barrel support, projection welded to the door edge, in accordance with ANSI A115.2 requirements.

86 Edge: Mortise lock prep reinforcement box with incorporated lock support, in accordance with ANSI A115.1 requirements.

PR: Rim panic reinforcement for surface mounted exit device application.

Special lock preparations are available. Preps such as, card-key locks, surface vertical rods, concealed vertical rods and multi-point lock systems to name a few.



▶ **Fire Labeling**

Metropolitan fire labeled steel doors are approved by both Intertek Testing Services (ITS/Warnock Hersey) and Underwriters Laboratories (UL) Fire Labeling programs.* Fire labeled steel doors must be installed with an equivalent fire labeled frame with approved fire listed hardware. Some restrictions do apply.



Fire Labeling Guide for HMD doors by Metropolitan Door Industries

MAXIMUM DOOR OPENING SIZE		
Single: 3'-6" x 7'-0" or 3'-0" x 8'-0"		
Double Door: 7'-0" x 7'-0" or 6'-0" x 8'-0"		
MINIMUM GAUGE	RATING	ALLOWABLE GLASS AREA
20	3 Hours	N/A *
20	1 1/2 Hours	100 in. ²
20	45 min.	1296 in. ²

🔥 FIRE LABELING NOTICE 🔥

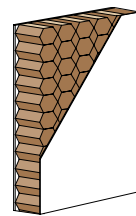
Openings shown above with glass in our Fire Labeling Guide are provisioned for 1/4" thick wire glass. Larger glass openings are available with the use of a fire listed glazing product that meets CPSC CAT II. Some restrictions do apply. Contact our customer service department for details. See pages 30-31 for more information.

* Please note that with the use of a fire listed glazing product that meets CPSC CAT II Metropolitan can provide 3 hour fire rated doors with up to 100 in.² of glass.

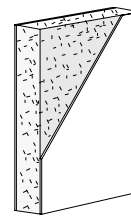
Metropolitan is committed to its customers to continuously improve the quality and performance of its products. As a result of this commitment, technical specifications are subject to change without notice.

▶ **Door Cores**

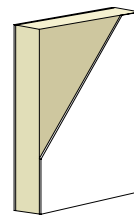
Contact our customer service department for core technical details and availability.



**Honeycomb
HMD-HC**



**Polystyrene
HMD-PS**



**Polyurethane
HMD-PU**