

HOLLOW METAL DOORS

Standard & Custom Engineered Doors

HMD-S SERIES STEEL STIFFENED DOOR

MDI® HMD-S Series Doors are available as:

14 Gauge	Extra Heavy Duty
16 Gauge	Heavy Duty
18 Gauge	Medium-Heavy Duty
20 Gauge	Medium-Standard Duty

A Complete line of Doors, Frames & Hardware



The HMD-S steel stiffened (channel-shaped stiffeners) door series is utilized in such applications where added security is required. These doors are available in a variety of sizes, gauges and elevations (Lites & louvers). MDI® offers one of the most comprehensive line-ups of HM door cores...and we offer most of our cores to be used with steel stiffeners.* Standard doors are available as 1 3/4" (45 mm) thick and are available in 14, 16, 18 and 20 gauge commercial quality (A40 galv.) steel and are reinforced to receive architectural hardware in accordance to ANSI A115 standards. Our HMD-S steel stiffened doors are also available in stainless steel, and G90 galvanized. Bullet resistant, blast resistant and STC (acoustical) door & frame systems are available.

General Specifications

- Door faces are flush design and free of any joints, welds or seams.
- Steel stiffeners are bonded to face sheets.
- Vertical edges are interlocked with a mechanical seam and reinforced with a reinforced epoxy resin, high viscosity, thicksotropic sealant. Seamless edge is optional.
- Both door edges are beveled 1/8" (3mm).
- Hinge reinforcements are prepared for standard weight 4 1/2" x 4 1/2" (114 mm x 114 mm) hinges.
- Hinge reinforcements can easily be field converted to accommodate heavy weight hinges.

Six Door Cores Available

- Honeycomb (HMD-SHC), Polystyrene insulated (HMD-SPS), Polyurethane insulated (HMD-SPU) & Fiberglass insulated (HMD-SFG) are available with steel stiffeners.

* Note:

The HMD-TR door is not available with steel stiffeners. If you require a temperature rise rated door along with the added security of steel stiffeners, please contact our customer service department for information on a temperature rise rating on our HMD-MED450 high security steel stiffened door.



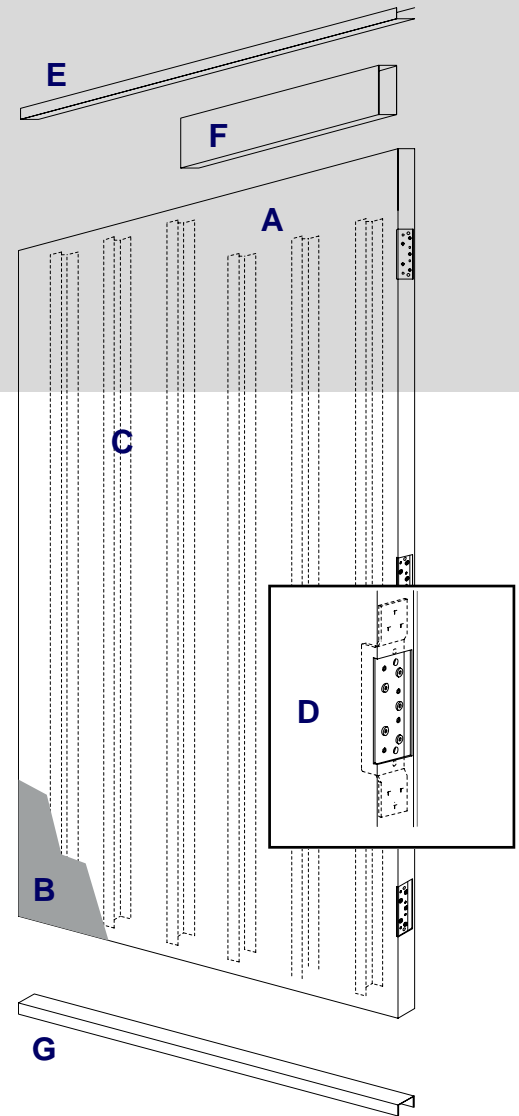
© 2007 Metropolitan Door Industries Corp.

© MDI and the MDI designed logo are Registered Trademarks of Metropolitan Door Industries Corp.

www.metropolitandoor.com

▶ MDI® Typical HMD-S Series Door Construction

- A. Door face sheets (A40 galv., stainless steel or G90 galvanized).
- B. Door core: Honeycomb, polystyrene, polyurethane or fiberglass.
- C. 20 gauge channel-shaped steel stiffeners @ 6" on-center (o.c.).
- D. 10 gauge high frequency dual purpose hinge reinforcement with return bend for added strength and rigidity. Hinge reinforcements can be easily field converted to accommodate heavy weight hinges. 7 gauge hinge reinforcements are optional.
- E. 18 gauge inverted top channel projection welded to the door skins and tack weld at each corner for added rigidity. Vinyl cap at top; or metal cap at top (flush and water-tight) are optional.
- F. 18 gauge door closer reinforcement—box style.
- G. 18 gauge inverted bottom channel projection welded to the door skins and tack weld at each corner for added rigidity. Metal cap at bottom (flush and water-tight) is optional.



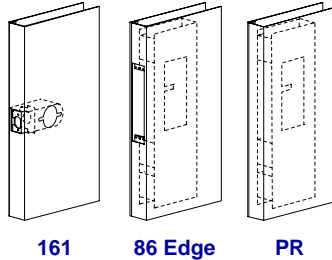
▶ Standard Lock Preps

161: Cylindrical lock reinforcement with added barrel support, projection welded to the door edge, in accordance with ANSI A115.2 requirements.

86 Edge: Mortise lock prep reinforcement box with incorporated lock support, in accordance with ANSI A115.1 requirements.

PR: Rim panic reinforcement for surface mounted exit device application.

Special lock preparations are available. Preps such as, card-key locks, surface vertical rods, concealed vertical rods and multi-point lock systems to name a few.



▶ Fire Labeling

Metropolitan fire labeled steel doors are approved by both Intertek Testing Services (ITS/Warnock Hersey) and Underwriters Laboratories (UL) Fire Labeling programs.* Fire labeled steel doors must be installed with an equivalent fire labeled frame with approved fire listed hardware. Some restrictions do apply.



Fire Labeling Guide for HMD doors by Metropolitan Door Industries

MAXIMUM DOOR OPENING SIZE		
Single: 4'-0" x 8'-0"		
Double Door: 8'-0" x 8'-0"		
MINIMUM GAUGE	RATING	ALLOWABLE GLASS AREA
20	3 Hours	N/A *
20	1 1/2 Hours	100 in. ²
20	45 min.	1296 in. ²

🔥 FIRE LABELING NOTICE 🔥

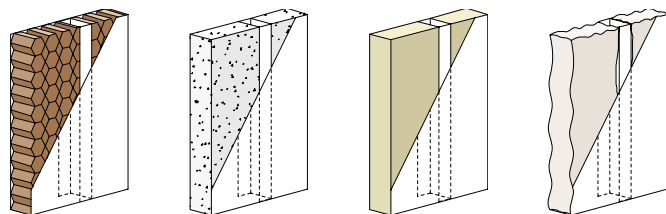
Openings shown above with glass in our Fire Labeling Guide are provisioned for 1/4" thick wire glass. Larger glass openings are available with the use of a fire listed glazing product that meets CPSC CAT II. Some restrictions do apply. Contact our customer service department for details. See pages 30-31 for more information.

* Please note that with the use of a fire listed glazing product that meets CPSC CAT II Metropolitan can provide 3 hour fire rated doors with up to 100 in.² of glass.

Metropolitan is committed to its customers to continuously improve the quality and performance of its products. As a result of this commitment, technical specifications are subject to change without notice.

▶ Door Cores

Contact our customer service department for core details and availability.



**Steel Stiffened Honeycomb
HMD-SHC**

**Steel Stiffened Polystyrene
HMD-SPS**

**Steel Stiffened Polyurethane
HMD-SPU**

**Steel Stiffened Fiberglass
HMD-SFG**

The HMD-S series door is a channel-shaped steel stiffened door with the steel stiffeners laminated to the face sheets with a heat resistant, structurally reinforced epoxy, resin based adhesive. If security is a high priority for your project, consider using our HMD-MED steel stiffened door. Contact our customer service department for more details.