

EMB SERIES

EMBOSSED DOOR SERIES

2-PANEL EMBOSSED DOORS

The MDI® Embossed Door Series provides timeless sophistication that enhances your residential or commercial project. Door construction provides a seamless face, free of welding marks. Beyond its elegant classic appearance, the Embossed Series can also be fire labeled for up to 3 hours. Standard doors are 1 3/4 in. (45 mm) thick and are available in 18 and 20 gauge* commercial quality (A40 galv.) steel.

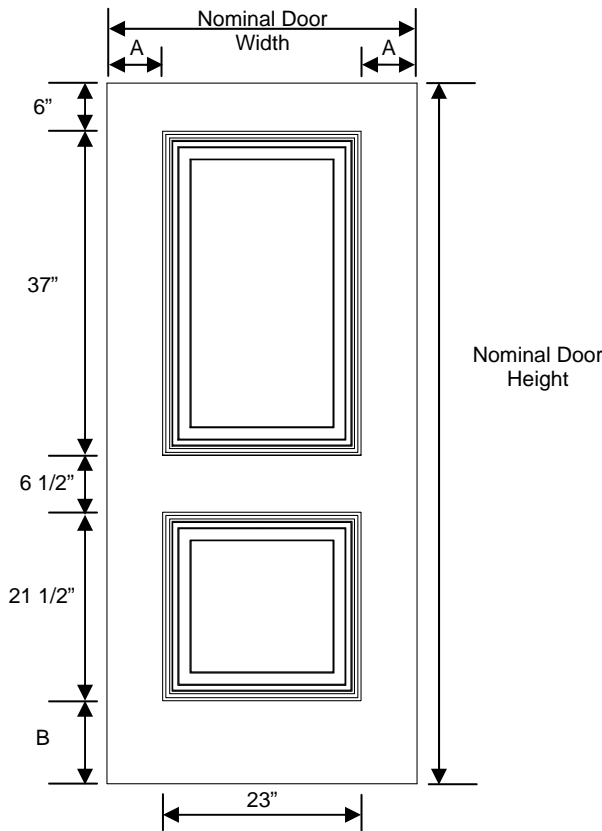
The Embossed door series is available in a variety of sizes and gauges. Presently it's available as 6-panel (6P) and 2-panel (2P) design (1-panel design is coming soon) and we can add vision lites and louvers upon request. Honeycomb is the standard core for the embossed series but as with our other door series the optional polystyrene insulated and polyurethane insulated cores are available. As with any door or frame by Metropolitan, we can custom engineer the embossed series door to meet your specifications. Contact our sales office for more details.

General Specifications

- Door faces are flush design and free of any joints, welds or seams.
- Vertical edges are interlocked with a mechanical seam and reinforced with a reinforced epoxy resin, high viscosity, thick-sotropic sealant. Seamless edge is optional.
- Hinge reinforcements are prepared for standard weight 4 1/2" x 4 1/2" (114 mm x 114 mm) hinges.
- Hinge reinforcements can easily be field converted to accommodate heavy weight hinges.

Three Door Cores Available

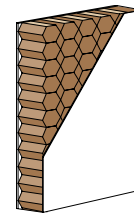
- Honeycomb (HMD-HC), Polystyrene insulated (HMD-PS) or Polyurethane insulated (HMD-PU).



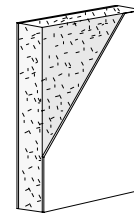
DOOR WIDTH		A
NOMINAL	EXACT (PULL SIDE)	
2'-6" (30")	29 3/4"	3 3/8"
2'-8" (32")	31 3/4"	4 3/8"
2'-10" (34")	33 3/4"	5 3/8"
3'-0" (36")	35 3/4"	6 3/8"

DOOR HEIGHT		B
NOMINAL	EXACT	
6'-8"	79 1/8"	8 1/8"
7'-0"	83 1/8"	12 1/8"

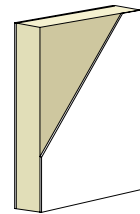
STANDARD DOOR CORES



Honeycomb
HMD-HC

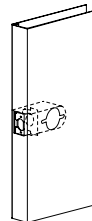


Polystyrene
HMD-PS

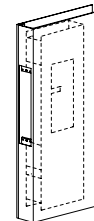


Polyurethane
HMD-PU

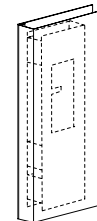
STANDARD LOCK PREPS:



161



86 Edge



PR



Doors, Frames & Hardware
Standard & Custom Engineered

Metropolitan Door Industries Corp.
350 Thorens Avenue
Garden City Park, NY 11040

Phone: 516.294.1801
Fax: 516.294.1828
www.metropolitandoor.com

© 2007 Metropolitan Door Industries Corp.

© MDI and the MDI designed logo are Registered Trademarks of Metropolitan Door Industries Corp.

www.metropolitandoor.com