

TECHNICAL DATA SHEET

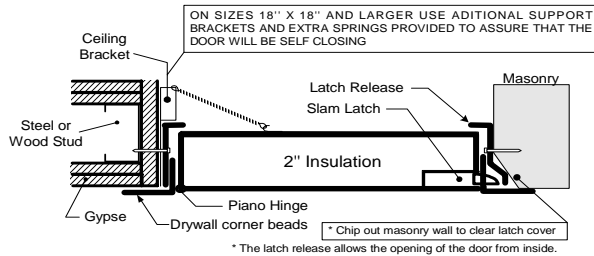


Phone: 516.294.1801
 Fax: 516.294.1828
 350 Thorens Avenue
 Garden City Park, NY 11040
 www.metropolitandoor.com

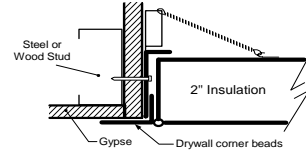
MODEL PFI-GYP FIRE RATED & INSULATED ACCESS DOOR W/ PERIMTER DRWALL BEAD

INSTALLATION (WALL AND CEILING)

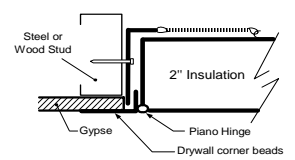
RECOMMENDED CEILING INSTALLATION PROCEDURE FOR 3 HOUR RATING



RECOMMENDED CEILING INSTALLATION PROCEDURE FOR 1 HOUR RATING

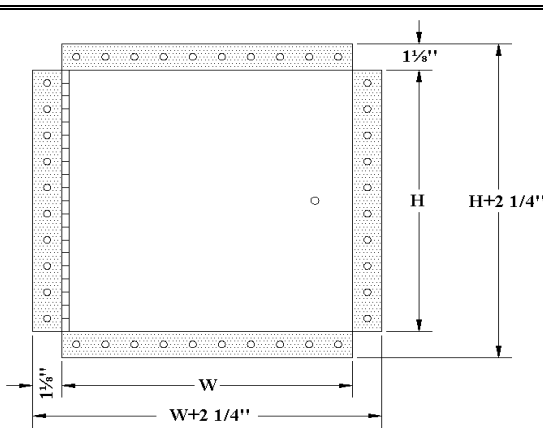


RECOMMENDED WALL INSTALLATION PROCEDURE FOR 1 HOUR RATING



DIMENSION AND APPEARANCE

Door Size W x H (IN)	WALL / CEILING OPENING (IN)	NUMBER OF LOCKS	SHIP WEIGHT (LBS) (KG)
8 x 8	8 1/4 x 8 1/4	1	7 3.2
12 x 12	12 1/4 x 12 1/4	1	10 4.5
16 x 16	16 1/4 x 16 1/4	1	14 6.4
18 x 18	18 1/4 x 18 1/4	1	17 7.7
22 x 22	22 1/4 x 22 1/4	1	20 9.1
22 x 30	22 1/4 x 30 1/4	1	30 13.6
22 x 36	22 1/4 x 36 1/4	2	34 15.5
24 x 24	24 1/4 x 24 1/4	1	24 10.9
24 x 36	24 1/4 x 36 1/4	2	36 16.4
*24 x 48	24 1/4 x 48 1/4	2	68 30.9
*32 x 32	32 1/4 x 32 1/4	2	43 19.5
*36 x 36	36 1/4 x 36 1/4	2	50 22.7
*48 x 48	48 1/4 x 48 1/4	2	108 49.1



* not available for ceiling rating
 (Special sizes available upon request)

Max. size to maintain fire rating: 24" x 36" (ceiling); 48" x 48" (wall).

DESCRIPTION AND MATERIAL SPECIFICATION

Fire Rating: 2 hour fire barrier, 1 1/2 hour B label, maximum temperature rise:
 after 30 minutes 250° F (139° C)
 after 60 minutes 450° F (250° C)
Warnock Hersey file #: L-14031
 for ceiling one (1) hour combustible rating and three (3) hour non-combustible rating
 MEA # 507-06-M

For wall: In conformance with the following codes:
 UL10b, UL-555, ASTM E152, NFPA 252 & ULC-S104

For ceiling and Floor: in conformance with the following code: UBC 43-7 for ceiling installation

Material: satin coated steel 16 gauge frame, galvanized drywall corner beads and 20 gauge door

Insulation: mineral wool

Hinge: continuous piano hinge allows opening to 165°

Lock / latch: self latching tool-key operated latch and /or ring operated latch, both included

Inside panel release: standard on all doors

Automatic panel closer: standard on all doors

Finish: phosphate dipped steel with *Sherwin-Williams* high quality grey powder coat primer

Packaging: wrapped individually in a box

Options:
 stainless steel 304 #4 (brushed finish)
 cylinder lock and key, handle operated cam latch, mortise preparation for cylinder lock (cylinder optional) Allen key

AREA LEFT BLANK FOR ARCHITECT APPROVAL STAMP

FIRE RATING CERTIFICATION



PROJECT DATA

Project name	Qty	W	H	# of locks	Finish
Architect :					
Dealer :					
Contractor :					
Location :					
Date :	Special instructions :				
Tagging Instructions :					

CUSTOMER APPROVAL:

DATE: